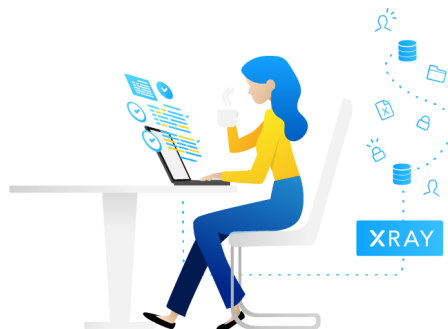


DATA XRAY

DATA MAPPING

Surface personal data risk in a flash with the Data X-Ray's automated data mapping feature.



Start mapping immediately

The Data X-Ray is designed so that you can get going straight away. It takes seconds to integrate with all major structured and unstructured datasources and also supports a full range of file types.

Automated assessment and quick results

The Data X-Ray's machine learning powered mapping functionality automatically analyses the contents of your data estate and promptly maps out the quantity, type and location of personal data in any datasource for you.

Both high level summaries and details provided

The Data X-Ray returns both a high level snapshot summary of its analysis across a datasource with a more detailed granular view of its analysis at each individual file and/or database column level, providing you with varying levels of mapping detail suitable for a range of possible tasks.

Reduce time taken from days per datasource to minutes

The Data X-Ray relies on powerful machine learning algorithms to complete its assessments. Ohalo clients were previously taking days to manually analyse a datasource which can now be understood in seconds using the Data X-Ray.



MAPPING IN PRACTICE

How visible is your risk? Powerful automated data mapping efficiently surfaces your privacy exposure.



Modern data estates are highly complex and often poorly understood. In organisations of any minimal level of scale, understanding exactly what data is held and where it is stored is a major challenge.

That challenge can easily become a liability when it prevents the organisation from being able to get visibility on what personal data it holds and where that is distributed.

The Data X-Ray takes care of this visibility problem with its quick, efficient automated data mapping functionality, helping you meet core data privacy legal obligations with ease.

Integrate and surface risk within minutes

The Data X-Ray takes seconds to integrate with your data estate and a matter of a few minutes more to complete its first data maps for you. All that is required are the relevant network and/or authentication credentials.

The high level data map results will allow you to complete first line data privacy risk assessments of any datasource within a matter of minutes to a level sufficient for most professionally advised data mapping exercises.

Should you need to dig deeper into the data map, the granular, detailed view of the Data X-Ray provides the user with a wealth of further information on sensitive data classes, frequency and where within a table or file such data is distributed.

SCHEDULE A DEMO TODAY

www.ohalo.co/demo